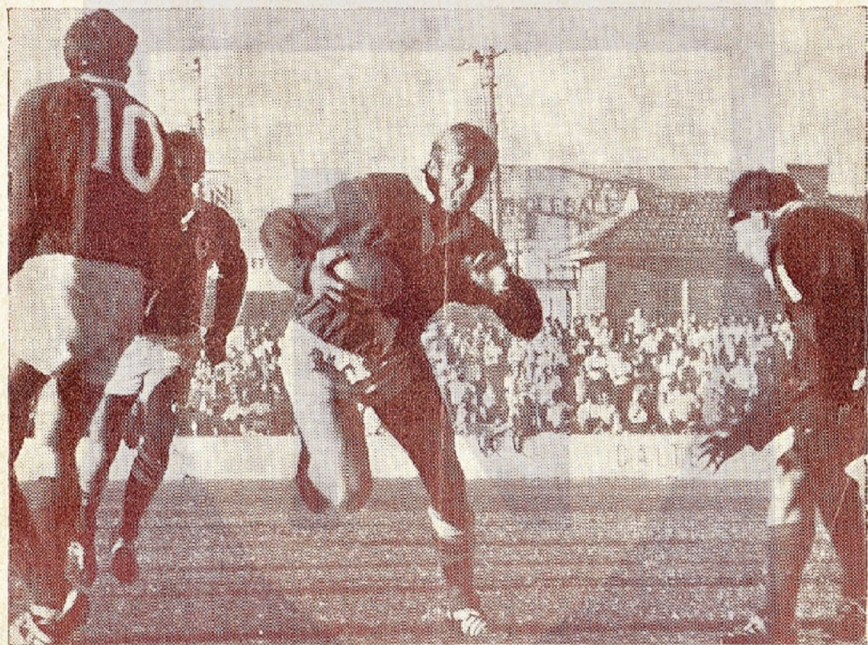


LEAGUE

NEWS

No. 12 — Price 10c

MAY 15, 16, 1971



Come to where the flavour is

MARLBORO COUNTRY



W. H. (Bill) BELL & CO.

210 PARRY STREET, HAMILTON

Phone: 61 1629

For all Radiator Repairs

DISTRICT AGENT FOR N.C.E. CO-OP. MEMBERS

WICKHAM OVAL—3 p.m.

Sunday, May 16, 1971

Northern Suburbs v. South Newcastle

NORTHERN SUBURBS

Blue with White N

Full-back:

1—P. Watsford

Three-quarters:

2—R. Cooper A. Newson—3

4—K. Sweetman G. Crompton—5

Halves:

6—P. Sullivan R. Andrews—7

Forwards:

8—D. Davey D. Maddison—9

10—R. Peterson K. Hutchinson—11

12—A. Jones D. Nichols—13

SOUTH NEWCASTLE

White, Red V

Full-back:

1—J. Anderson

Three-quarters:

2—V. Cronin P. Miller—3

4—M. Bickley W. House—5

Halves:

6—R. McDermott J. Lashwood—7

Forwards:

8—P. Kachel M. Davis—9

10—A. Murrell P. Donohue—11

12—R. Smith D. Morley—13

Referee: W. Humphries

Linesmen: D. Webb (Blue Flag), L. Maughan (Red Flag)

RESERVE GRADE — 1.30 p.m.

NORTHERN SUBURBS

Blue with White N

Full-back:

1—G. Elliot

Three-quarters:

2—B. Bussell D. Steele—3

4—M. Hesketh J. Karnaghan—5

Halves:

6—M. Witcom N. Skelton—7

Forwards:

8—S. Farquar D. Greaves—9

10—B. Russell J. Flaherty—11

12—E. Russell G. Alchin—13

SOUTH NEWCASTLE

White, Red V

Full-back:

1—J. Johnson

Three-quarters:

2—S. Hassett D. Rowe—3

4—L. Swarzes K. Swift—5

Halves:

6—G. Smallcombe B. Hoffman—7

Forwards:

8—G. Stephenson B. Lawrence—9

10—D. Frazer A. Stone—11

12—N. Hoffman D. Morgan—13

Referee: K. Barwick

Linesmen: R. Keating (Blue Flag), R. Jones (Red Flag)

DON'T BE PENALISED!

By missing the opportunities
at

LANCE ADAMS

Music Store and Studios

Guitars from \$12.95 to all
Famous Brands

48 Hunter St. Phone 2 3808

For all Your
Requirements in . . .
Men's and Boys' Football
Togs, Jumpers, Shorts,
and Hose

See:

**A. ABERCROMBIE
TERMINUS, MAYFIELD**

Phone 68 2198

Special Club Discount

FOOTWEAR . . .

For all the Family at
our Six Stores

**JOHNSTON'S
Pty. Ltd.**

Maitland, Adamstown,
Raymond Terrace,
East Maitland, Kotara Fair,
Gingelton

THIRD GRADE

12.15 p.m.

CENTRAL-CHARLESTOWN

White, Blue V, Blue Shorts

1—G. Marshall

- | | |
|----------------------|------------------|
| 2— I. Condon | B. Nash—3 |
| 4— B. Paget | W. Mathews—5 |
| 6— R. Stamp | P. Busted—7 |
| 8— R. Jackson | J. Marshall—9 |
| 10— D. Murray | R. Simmington—11 |
| 12— G. Owens | D. Bailey—13 |

WARATAH-MAYFIELD

Maroon, Gold V

1—T. Anthony

- | | |
|------------------------|----------------|
| 2— K. Fishlock | G. Naylor—3 |
| 4— R. Bailey | C. Trypas—5 |
| 6— P. Brophy | T. Warner—7 |
| 8— P. Osborne | K. Skelley—9 |
| 10— P. Muddle | A. Anderson—11 |
| 12— G. Melville | W. Richards—13 |

Referee: R. Paton

Linesmen: J. Walker (Blue Flag), K. Wallace (Red Flag)

MAITLAND

Black and White

1—K. Cousins

- | | |
|--------------------------|----------------|
| 2— S. Ongley | H. Geissler—3 |
| 4— W. Griffiths | R. Harkness—5 |
| 6— R. McKinnon | P. Williams—7 |
| 8— R. Wawszkowitz | K. Lantry—9 |
| 10— L. Vile | K. Bolton—11 |
| 12— P. Perry | G. Oldfield—13 |

CESSNOCK

Black and Gold

1—G. Durie

- | | |
|------------------------|----------------|
| 2— R. Smith | W. Davey—3 |
| 4— B. Lidbury | B. Connolly—5 |
| 6— R. Johnston | T. Connolly—7 |
| 8— G. Simpson | W. Jobson—9 |
| 10— F. Lennard | P. Apthorpe—11 |
| 12— L. Williams | B. Peck—13 |

Referee: J. Smith

Linesmen: J. Thornton (Blue Flag), R. Milton (Red Flag)

WESTERN SUBURBS

Red and Green

1—K. Galvin

- | | |
|-----------------------|---------------|
| 2— A. Campbell | K. Campbell—3 |
| 4— M. Davies | R. Davey—5 |
| 6— P. O'Neill | P. Anderson—7 |
| 8— L. Scott | N. Gibson—9 |
| 10— G. Galton | A. Drury—11 |
| 12— T. Prince | N. Beri—13 |

LAKES UNITED

Blue and Gold, White Shorts

1—R. Smith

- | | |
|-------------------------|----------------|
| 2— R. Hall | R. Baxter—3 |
| 4— H. Small | N. Goudge—5 |
| 6— W. Cartwright | G. Swancott—7 |
| 8— R. Bell | B. Wade—9 |
| 10— G. Gilkinson | P. Ramplin—11 |
| 12— S. Sukier | F. Mullaney—13 |

Referee: D. Thornton

Linesmen: G. Benson (Blue Flag), T. Mowbray (Red Flag)

MACQUARIE UNITED

Green and Gold Bars, Black Shorts

1—B. Lulham

- | | |
|-------------------------|----------------|
| 2— K. Vardy | T. Maule—3 |
| 4— B. Robinson | W. Ping—5 |
| 6— P. McNamee | K. Mavin—7 |
| 8— R. Brogden | T. Redman—9 |
| 10— J. Findlater | P. Neylan—11 |
| 12— P. Shields | R. McDonald—13 |

KURRI KURRI

Half Red Top, Half Blue Bottom

1—T. Wallace

- | | |
|----------------------------|----------------|
| 2— M. Osland | D. Beveridge—3 |
| 4— P. Rouse | D. Swan—5 |
| 6— J. Hall | T. Sellars—7 |
| 8— B. Hampton | J. Collins—9 |
| 10— G. Hetherington | J. Syers—11 |
| 12— F. Nicholson | M. Bower—13 |

Referee: D. Crich

Linesmen: W. Hardy (Blue Flag), N. Digby (Red Flag)

NORTHERN SUBURBS

Blue with White N

1—G. Jordan

- | | |
|------------------------|----------------|
| 2— L. Plimmer | R. Benson—3 |
| 4— J. Sansom | L. Davson—5 |
| 6— V. Watsford | G. Callaghan—7 |
| 8— P. Cox | P. Gray—9 |
| 10— N. Peterson | T. Malone—11 |
| 12— D. Cassidy | K. Byers—13 |

SOUTH NEWCASTLE

White, Red V

1—L. Goolley

- | | |
|----------------------|----------------|
| 2— P. Johnson | A. Nother—3 |
| 4— G. Nicol | J. Gardiner—5 |
| 6— B. Walton | R. Griffiths—7 |
| 8— A. Back | T. Jones—9 |
| 10— G. Allen | G. Graham—11 |
| 12— D. Evans | A. Stamp—13 |

Referee: C. J. Russell

Linesmen: R. Keating (Blue Flag), R. Jones (Red Flag)